

Figure 3-1
Sediment Sampling Locations Overview

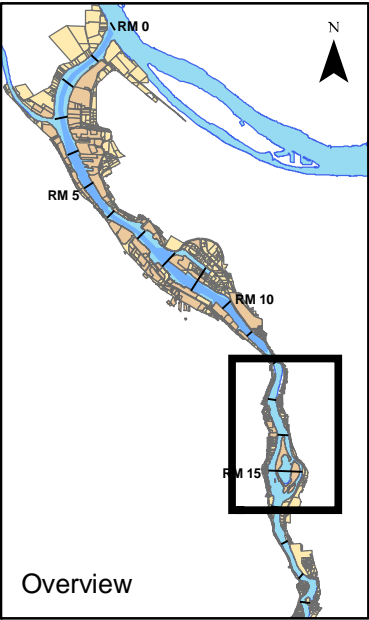
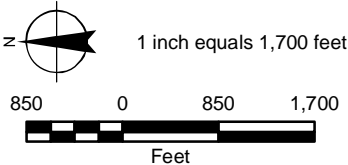
Downtown Portland
Sediment Characterization
Field and Data Report

River Mile 12 to 16

Willamette River
Portland, Oregon

LEGEND

- DPSC Core Location
- DPSC Grab Location
- LWG Core Location
- LWG Grab Location
- PP&R Core Location
- DEQ Cleanup Site (ECSI#/Name)
- City Outfall
- Other Outfall
- Stormwater Pipeline
- Abandoned Stormwater Pipeline
- PGE Station L Sediment Cap, Approximate
- Zidell - DEQ Sediment Management Area
- River Mile (RM)



MAP NOTES:

Projection: Oregon State Plane North
Datum: North American Datum of 1983
Date: December 23, 2008
1. The locations of all features shown are approximate.
2. DPSC = Downtown Portland Sediment Characterization.
3. PP&R = Portland Parks & Recreation.
4. LWG = Lower Willamette Group.
5. ECSI = Environmental Cleanup Site Information (information current as of February 19, 2008).
6. LWG core and grab information obtained from LWG SCRA Combo as of August 28, 2008.
7. PGE Station L sediment cap boundary approximated based on PGE Station L Phase II Final Report (CH2M-Hill, 1991).

8. Zidell-DEQ Sediment Management Area (SMA) boundary provided by Maul, Foster, Alongi (November 3, 2008).
9. Outfall data obtained from the LWG's GIS shapefile entitled "Outfall_Oct_08.shp". Original source of information provided by the City of Portland in June of 2005. Stormwater pipeline data were provided to GSI Water Solutions by the City of Portland in February of 2008. As data were compiled from a variety of sources, no warranty is made as to the accuracy, reliability, or completeness of these data. Conveyance system information can be accessed at www.portlandmaps.com.

Figure 3-2a
Sediment Sampling Locations By River Mile

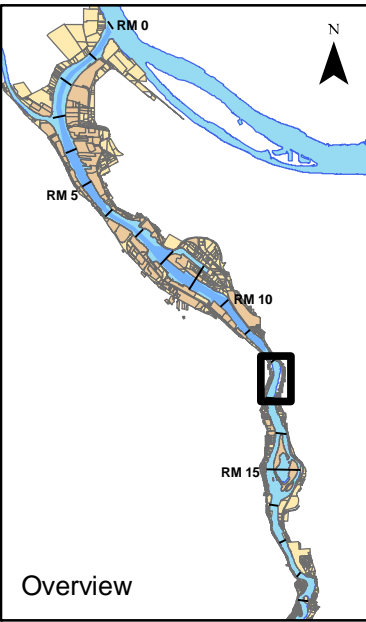
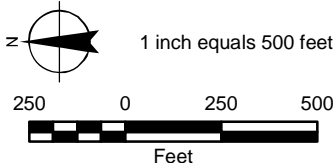
Downtown Portland
Sediment Characterization
Field and Data Report

River Mile 12 to 13

Willamette River
Portland, Oregon

LEGEND

- DPSC Core Location
- DPSC Grab Location
- LWG Core Location
- LWG Grab Location
- PP&R Core Location
- DEQ Cleanup Site (ECSI#/Name)
- City Outfall
- Other Outfall
- Stormwater Pipeline
- Abandoned Stormwater Pipeline
- PGE Station L Sediment Cap, Approximate
- Zidell - DEQ Sediment Management Area
- River Mile (RM)



MAP NOTES:

Projection: Oregon State Plane North
Datum: North American Datum of 1983
Date: December 23, 2008
1. The locations of all features shown are approximate.
2. DPSC = Downtown Portland Sediment Characterization.
3. PP&R = Portland Parks & Recreation.
4. LWG = Lower Willamette Group.
5. ECSI = Environmental Cleanup Site Information (information current as of February 19, 2008).
6. LWG core and grab information obtained from LWG SCRA Combo as of August 28, 2008.
7. PGE Station L sediment cap boundary approximated based on PGE Station L Phase II Final Report (CH2M Hill, 1991).

8. Zidell-DEQ Sediment Management Area (SMA) boundary provided by Maul, Foster, Alongi (November 3, 2008).
9. Outfall data obtained from the LWG's GIS shapefile entitled "Outfall_Oct_08.shp". Original source of information provided by the City of Portland in June of 2005. Stormwater pipeline data were provided to GSI Water Solutions by the City of Portland in February of 2008. As data were compiled from a variety of sources, no warranty is made as to the accuracy, reliability, or completeness of these data. Conveyance system information can be accessed at www.portlandmaps.com.

Figure 3-2b
Sediment Sampling Locations By River Mile

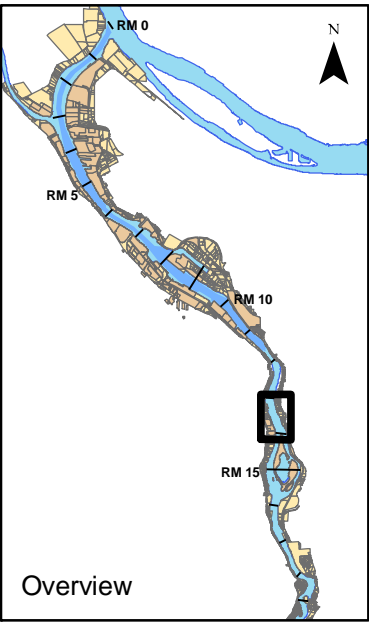
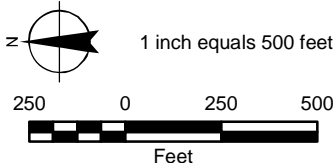
Downtown Portland
Sediment Characterization
Field and Data Report

River Mile 13 to 14

Willamette River
Portland, Oregon

LEGEND

- DPSC Core Location
- DPSC Grab Location
- LWG Core Location
- LWG Grab Location
- PP&R Core Location
- DEQ Cleanup Site (ECSI#/Name)
- City Outfall
- Other Outfall
- Stormwater Pipeline
- Abandoned Stormwater Pipeline
- PGE Station L Sediment Cap, Approximate
- Zidell - DEQ Sediment Management Area
- River Mile (RM)



MAP NOTES:

Projection: Oregon State Plane North
Datum: North American Datum of 1983
Date: December 23, 2008
1. The locations of all features shown are approximate.
2. DPSC = Downtown Portland Sediment Characterization.
3. PP&R = Portland Parks & Recreation.
4. LWG = Lower Willamette Group.
5. ECSI = Environmental Cleanup Site Information (information current as of February 19, 2008).
6. LWG core and grab information obtained from LWG SCRA Combo as of August 28, 2008.
7. PGE Station L sediment cap boundary approximated based on PGE Station L Phase II Final Report (CH2M Hill, 1991).

8. Zidell-DEQ Sediment Management Area (SMA) boundary provided by Maul, Foster, Alongi (November 3, 2008).
9. Outfall data obtained from the LWG's GIS shapefile entitled "Outfall_Oct_08.shp". Original source of information provided by the City of Portland in June of 2005. Stormwater pipeline data were provided to GSI Water Solutions by the City of Portland in February of 2008. As data were compiled from a variety of sources, no warranty is made as to the accuracy, reliability, or completeness of these data. Conveyance system information can be accessed at www.portlandmaps.com.

Figure 3-2c
Sediment Sampling Locations By River Mile

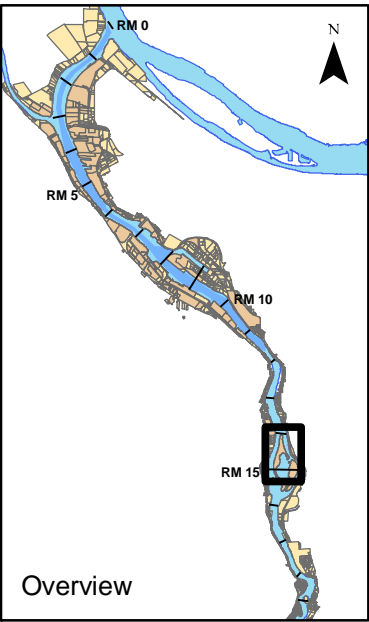
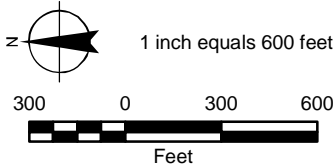
Downtown Portland
Sediment Characterization
Field and Data Report

River Mile 14 to 15

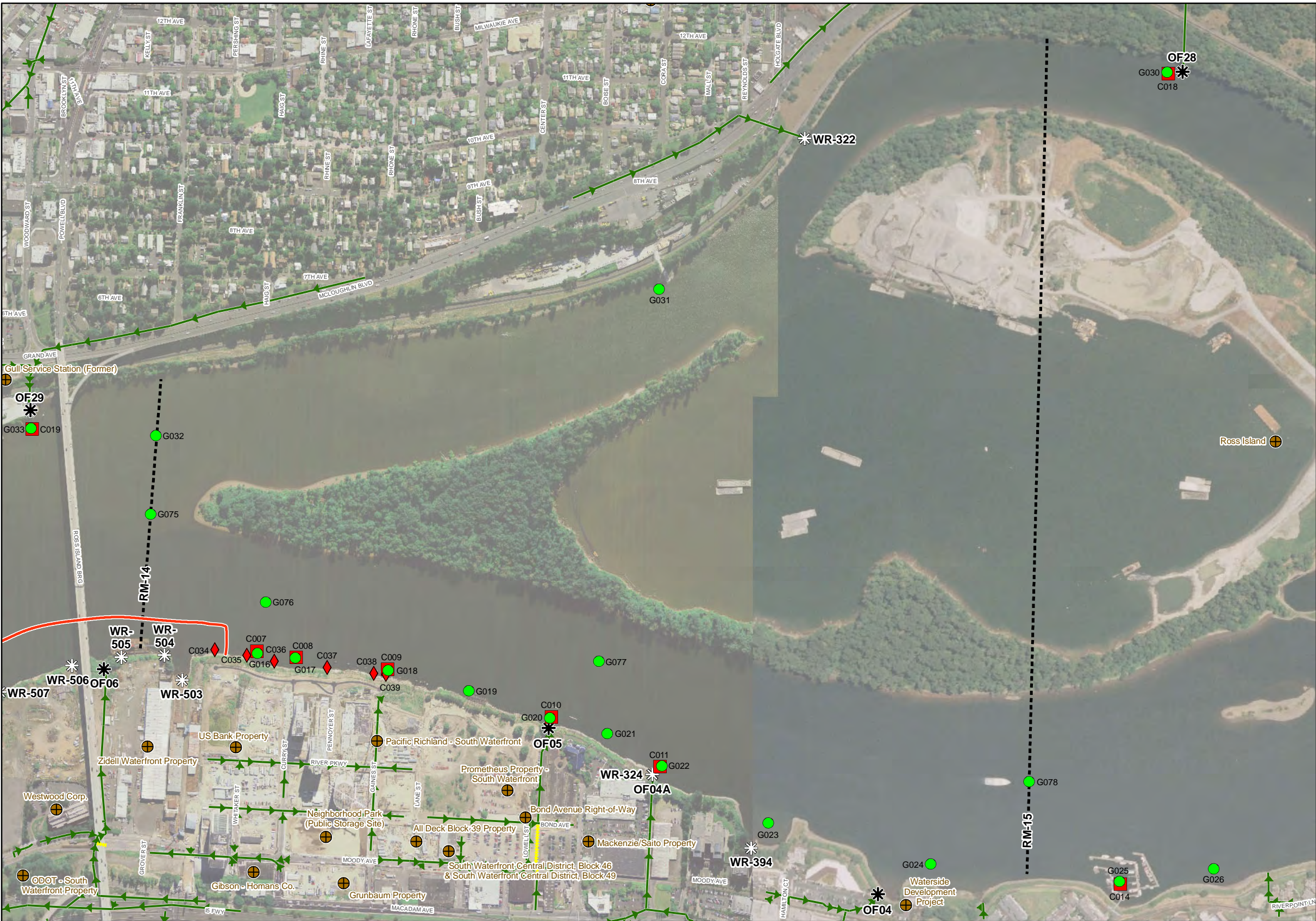
Willamette River
Portland, Oregon

LEGEND

- DPSC Core Location
- DPSC Grab Location
- LWG Core Location
- LWG Grab Location
- PP&R Core Location
- DEQ Cleanup Site (ECSI#/Name)
- City Outfall
- Other Outfall
- Stormwater Pipeline
- Abandoned Stormwater Pipeline
- PGE Station L Sediment Cap, Approximate
- Zidell - DEQ Sediment Management Area
- River Mile (RM)



Overview



MAP NOTES:

Projection: Oregon State Plane North
Datum: North American Datum of 1983
Date: December 23, 2008
1. The locations of all features shown are approximate.
2. DPSC = Downtown Portland Sediment Characterization.
3. PP&R = Portland Parks & Recreation.
4. LWG = Lower Willamette Group.
5. ECSI = Environmental Cleanup Site Information (information current as of February 19, 2008).
6. LWG core and grab information obtained from LWG SCRA Combo as of August 28, 2008.
7. PGE Station L sediment cap boundary approximated based on PGE Station L Phase II Final Report (CH2MHill, 1991).

8. Zidell-DEQ Sediment Management Area (SMA) boundary provided by Maul, Foster, Alongi (November 3, 2008).
9. Outfall data obtained from the LWG's GIS shapefile entitled "Outfall_Oct_08.shp". Original source of information provided by the City of Portland in June of 2005. Stormwater pipeline data were provided to GSI Water Solutions by the City of Portland in February of 2008. As data were compiled from a variety of sources, no warranty is made as to the accuracy, reliability, or completeness of these data. Conveyance system information can be accessed at www.portlandmaps.com.

