

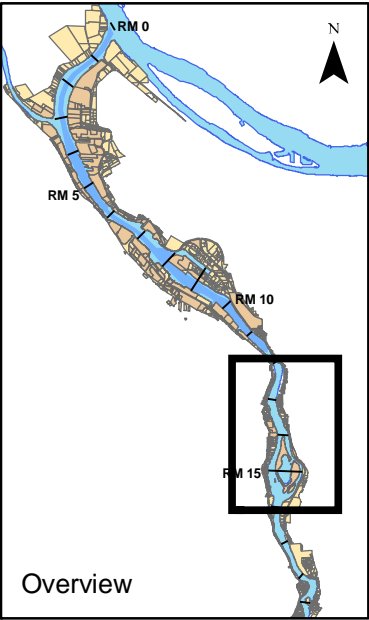
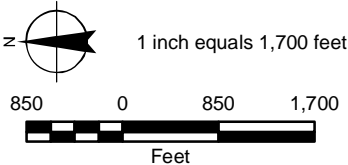
Figure 6-2a
Total PCB Aroclor Concentrations
in Sediment Map

Downtown Portland
Sediment Characterization
Field and Data Report

River Mile 12 to 16

Willamette River
Portland, Oregon

- LEGEND**
- DPSC or LWG Core Location
 - DPSC or LWG Grab Location
 - PP&R Core Location
 - DEQ Cleanup Site (ECSI#/Name)
 - City Outfall
 - Other Outfall
 - Stormwater Pipeline
 - Abandoned Stormwater Pipeline
 - PGE Station L Sediment Cap, Approximate
 - Zidell - DEQ Sediment Management Area
 - River Mile (RM)



MAP NOTES:

Projection: Oregon State Plane North
Datum: North American Datum of 1983
Date: December 23, 2008
1. The locations of all features shown are approximate.
2. DPSC = Downtown Portland Sediment Characterization.
3. PP&R = Portland Parks & Recreation.
4. LWG = Lower Willamette Group.
5. ECSI = Environmental Cleanup Site Information (information current as of February 19, 2008).
6. LWG core and grab information obtained from LWG SCRA Combo as of August 28, 2008.
7. PGE Station L sediment cap boundary approximated based on PGE Station L Phase II Final Report (CH2M-Hill, 1991).

8. Zidell-DEQ Sediment Management Area (SMA) boundary provided by Maul, Foster, Alongi (November 3, 2008).
9. Analyte percentiles calculated based on the combined DPSC, PP&R, and LWG data from RM 12 to RM 16.
10. Cores with multiple sections analyzed depict percentiles for the highest concentrations detected.
11. Samples with multiple values, such as field QC splits and reanalyzed samples, were averaged as described in the Field and Data Report.
12. Outfall data obtained from the LWG's GIS shapefile entitled "Outfall_Oct_08.shp". Original source of information provided by the City of Portland in June of 2005. Stormwater pipeline data were provided to GSI Water Solutions by the City of Portland in February of 2008. As data were compiled from a variety of sources, no warranty is made as to the accuracy, reliability, or completeness of these data. Conveyance system information can be accessed at www.portlandmaps.com.

Concentrations of Total PCB Aroclors

- 0 - 50th Percentile (>MDL - 9 ug/kg)
- >50th - 75th Percentile (>9 - 43 ug/kg)
- >75th - 90th Percentile (>43 - 113 ug/kg)
- >90th - 95th Percentile (>113 - 171 ug/kg)
- >95th - 100th Percentile (>171 - 4200 ug/kg)
- Not Detected above Method Detection Limit (MDL)
- Not Analyzed



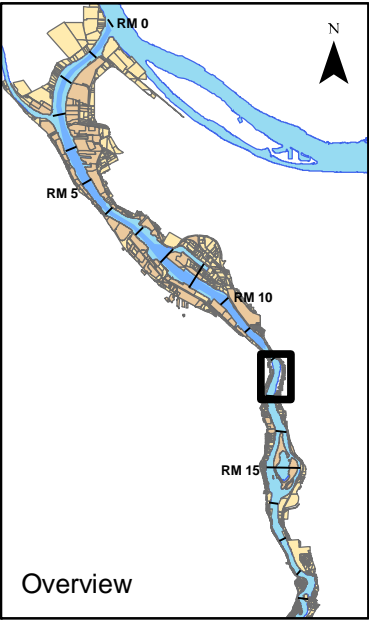
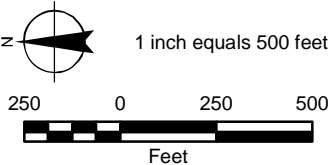
Figure 6-2b
Total PCB Aroclor Concentrations
in Sediment Map

Downtown Portland
Sediment Characterization
Field and Data Report

River Mile 12 to 13

Willamette River
Portland, Oregon

- LEGEND**
- DPSC or LWG Core Location
 - DPSC or LWG Grab Location
 - PP&R Core Location
 - DEQ Cleanup Site (ECSI#/Name)
 - City Outfall
 - Other Outfall
 - Stormwater Pipeline
 - Abandoned Stormwater Pipeline
 - PGE Station L Sediment Cap, Approximate
 - Zidell - DEQ Sediment Management Area
 - River Mile (RM)



MAP NOTES:

Projection: Oregon State Plane North
Datum: North American Datum of 1983
Date: December 23, 2008
1. The locations of all features shown are approximate.
2. DPSC = Downtown Portland Sediment Characterization.
3. PP&R = Portland Parks & Recreation.
4. LWG = Lower Willamette Group.
5. ECSI = Environmental Cleanup Site Information (information current as of February 19, 2008).
6. LWG core and grab information obtained from LWG SCRA Combo as of August 28, 2008.
7. PGE Station L sediment cap boundary approximated based on PGE Station L Phase II Final Report (CH2M-Hill, 1991).

8. Zidell-DEQ Sediment Management Area (SMA) boundary provided by Maul, Foster, Alongi (November 3, 2008).
9. Analyte percentiles calculated based on the combined DPSC, PP&R, and LWG data from RM 12 to RM 16.
10. Cores with multiple sections analyzed depict percentiles for the highest concentrations detected.
11. Samples with multiple values, such as field QC splits and reanalyzed samples, were averaged as described in the Field and Data Report.
12. Outfall data obtained from the LWG's GIS shapefile entitled "Outfall_Oct_08.shp". Original source of information provided by the City of Portland in June of 2005. Stormwater pipeline data were provided to GSI Water Solutions by the City of Portland in February of 2008. As data were compiled from a variety of sources, no warranty is made as to the accuracy, reliability, or completeness of these data. Conveyance system information can be accessed at www.portlandmaps.com.

Concentrations of Total PCB Aroclors

- 0 - 50th Percentile (>MDL - 9 ug/kg)
- >50th - 75th Percentile (>9 - 43 ug/kg)
- >75th - 90th Percentile (>43 - 113 ug/kg)
- >90th - 95th Percentile (>113 - 171 ug/kg)
- >95th - 100th Percentile (>171 - 4200 ug/kg)
- Not Detected above Method Detection Limit (MDL)
- Not Analyzed

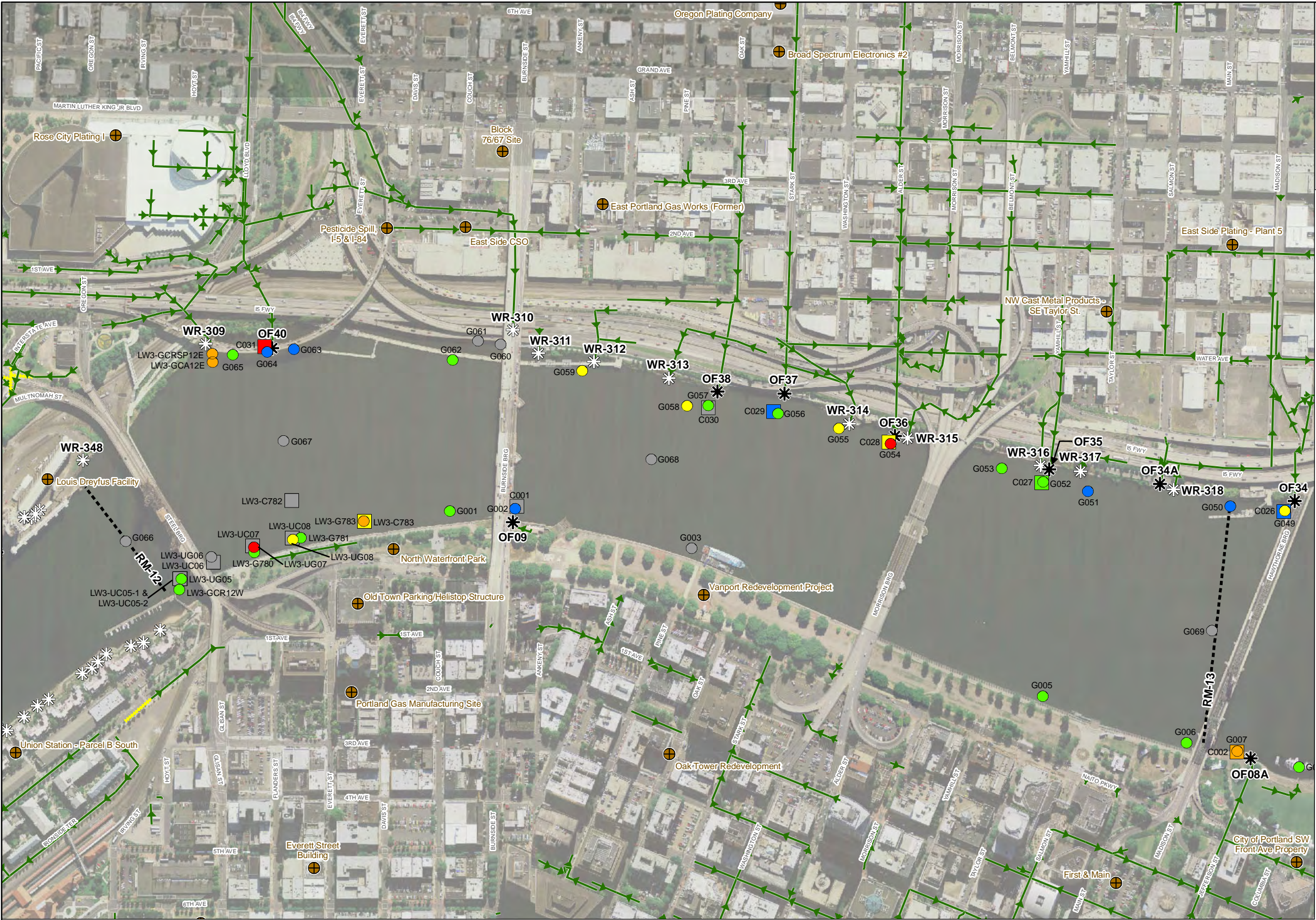
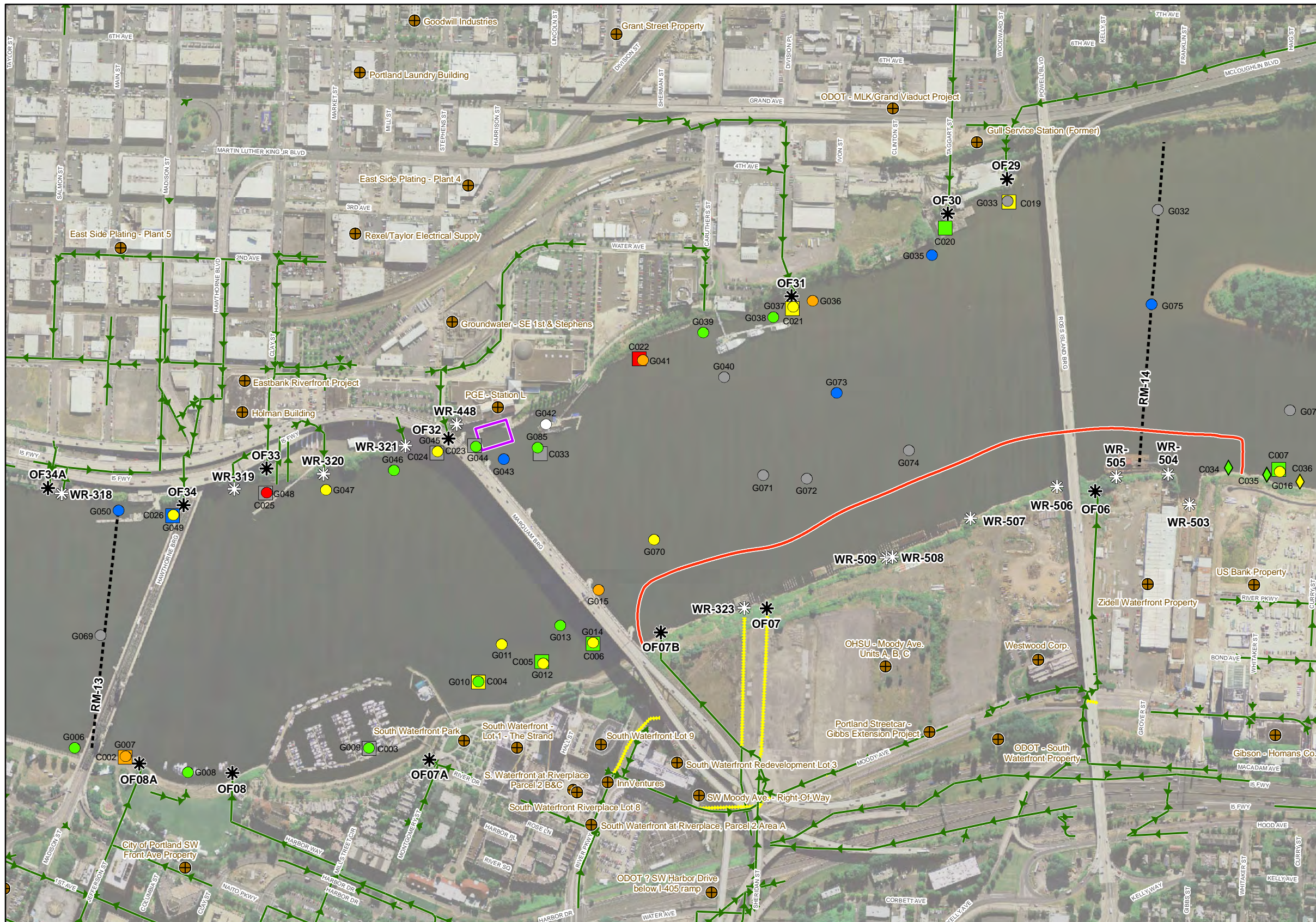
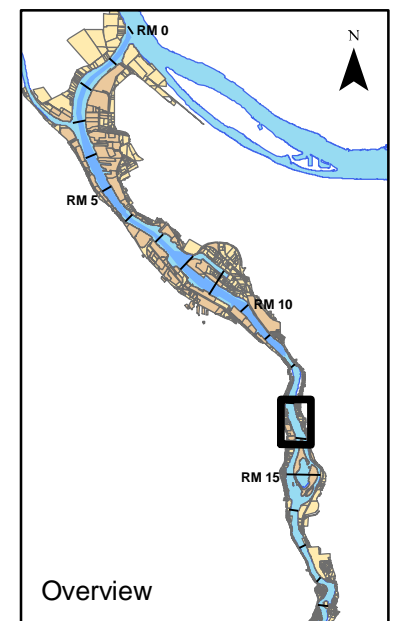
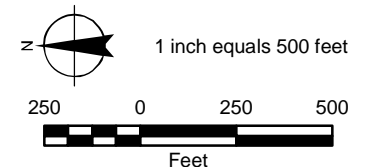


Figure 6-2c
Total PCB Aroclor Concentrations
in Sediment Map
Downtown Portland
Sediment Characterization
Field and Data Report
River Mile 13 to 14
Willamette River
Portland, Oregon

LEGEND

- DPSC or LWG Core Location
- DPSC or LWG Grab Location
- PP&R Core Location
- DEQ Cleanup Site (ECSI#/Name)
- City Outfall
- Other Outfall
- Stormwater Pipeline
- Abandoned Stormwater Pipeline
- PGE Station L Sediment Cap, Approximate
- Zidell - DEQ Sediment Management Area
- River Mile (RM)



MAP NOTES:

Projection: Oregon State Plane North
Datum: North American Datum of 1983
Date: December 23, 2008
1. The locations of all features shown are approximate.
2. DPSC = Downtown Portland Sediment Characterization.
3. PP&R = Portland Parks & Recreation.
4. LWG = Lower Willamette Group.
5. ECSI = Environmental Cleanup Site Information (information current as of February 19, 2008).
6. LWG core and grab information obtained from LWG SCRA Combo as of August 28, 2008.
7. PGE Station L sediment cap boundary approximated based on PGE Station L Phase II Final Report (CH2M Hill, 1991).

8. Zidell-DEQ Sediment Management Area (SMA) boundary provided by Maul, Foster, Alongi (November 3, 2008).
9. Analyte percentiles calculated based on the combined DPSC, PP&R, and LWG data from RM 12 to RM 16.
10. Cores with multiple sections analyzed depict percentiles for the highest concentrations detected.
11. Samples with multiple values, such as field QC splits and reanalyzed samples, were averaged as described in the Field and Data Report.
12. Outfall data obtained from the LWG's GIS shapefile entitled "Outfall_Oct_08.shp". Original source of information provided by the City of Portland in June of 2005. Stormwater pipeline data were provided to GSI Water Solutions by the City of Portland in February of 2008. As data were compiled from a variety of sources, no warranty is made as to the accuracy, reliability, or completeness of these data. Conveyance system information can be accessed at www.portlandmaps.com.

Concentrations of Total PCB Aroclors

- 0 - 50th Percentile (>MDL - 9 ug/kg)
- >50th - 75th Percentile (>9 - 43 ug/kg)
- >75th - 90th Percentile (>43 - 113 ug/kg)
- >90th - 95th Percentile (>113 - 171 ug/kg)
- >95th - 100th Percentile (>171 - 4200 ug/kg)
- Not Detected above Method Detection Limit (MDL)
- Not Analyzed



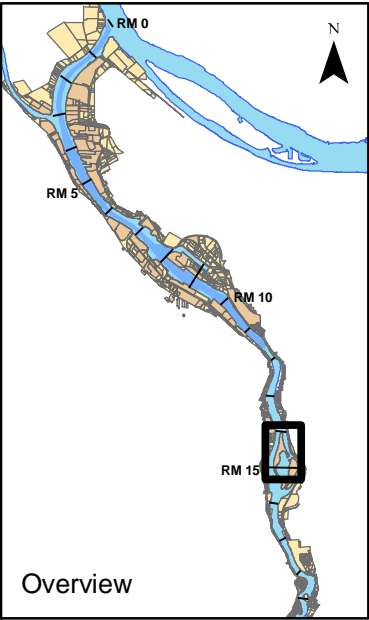
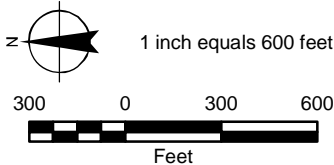
Figure 6-2d
Total PCB Aroclor Concentrations
in Sediment Map

Downtown Portland
Sediment Characterization
Field and Data Report

River Mile 14 to 15

Willamette River
Portland, Oregon

- LEGEND**
- DPSC or LWG Core Location
 - DPSC or LWG Grab Location
 - PP&R Core Location
 - DEQ Cleanup Site (ECSI#/Name)
 - City Outfall
 - Other Outfall
 - Stormwater Pipeline
 - Abandoned Stormwater Pipeline
 - PGE Station L Sediment Cap, Approximate
 - Zidell - DEQ Sediment Management Area
 - River Mile (RM)



MAP NOTES:
Projection: Oregon State Plane North
Datum: North American Datum of 1983
Date: December 23, 2008
1. The locations of all features shown are approximate.
2. DPSC = Downtown Portland Sediment Characterization.
3. PP&R = Portland Parks & Recreation.
4. LWG = Lower Willamette Group.
5. ECSI = Environmental Cleanup Site Information (information current as of February 19, 2008).
6. LWG core and grab information obtained from LWG SCRA Combo as of August 28, 2008.
7. PGE Station L sediment cap boundary approximated based on PGE Station L Phase II Final Report (CH2M-Hill, 1991).

8. Zidell-DEQ Sediment Management Area (SMA) boundary provided by Maul, Foster, Alongi (November 3, 2008).
9. Analyte percentiles calculated based on the combined DPSC, PP&R, and LWG data from RM 12 to RM 16.
10. Cores with multiple sections analyzed depict percentiles for the highest concentrations detected.
11. Samples with multiple values, such as field QC splits and reanalyzed samples, were averaged as described in the Field and Data Report.
12. Outfall data obtained from the LWG's GIS shapefile entitled "Outfall_Oct_08.shp". Original source of information provided by the City of Portland in June of 2005. Stormwater pipeline data were provided to GSI Water Solutions by the City of Portland in February of 2008. As data were compiled from a variety of sources, no warranty is made as to the accuracy, reliability, or completeness of these data. Conveyance system information can be accessed at www.portlandmaps.com.

Concentrations of Total PCB Aroclors

0 - 50th Percentile (>MDL - 9 ug/kg)	>95th - 100th Percentile (>171 - 4200 ug/kg)
>50th - 75th Percentile (>9 - 43 ug/kg)	Not Detected above Method Detection Limit (MDL)
>75th - 90th Percentile (>43 - 113 ug/kg)	Not Analyzed
>90th - 95th Percentile (>113 - 171 ug/kg)	



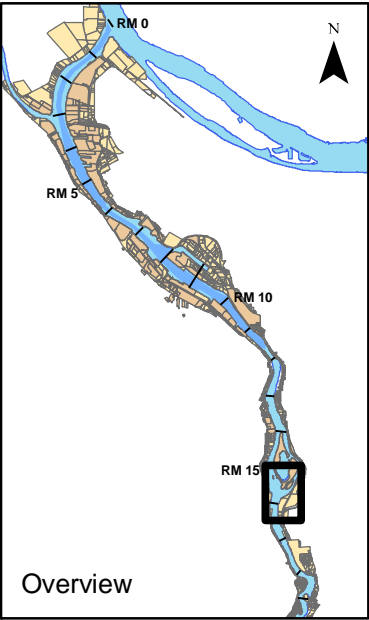
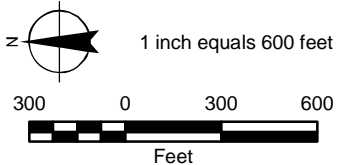
Figure 6-2e
Total PCB Aroclor Concentrations
in Sediment Map

Downtown Portland
Sediment Characterization
Field and Data Report

River Mile 15 to 16

Willamette River
Portland, Oregon

- LEGEND**
- DPSC or LWG Core Location
 - DPSC or LWG Grab Location
 - PP&R Core Location
 - DEQ Cleanup Site (ECSI#/Name)
 - City Outfall
 - Other Outfall
 - Stormwater Pipeline
 - Abandoned Stormwater Pipeline
 - PGE Station L Sediment Cap, Approximate
 - Zidell - DEQ Sediment Management Area
 - River Mile (RM)



MAP NOTES:
Projection: Oregon State Plane North
Datum: North American Datum of 1983
Date: December 23, 2008
1. The locations of all features shown are approximate.
2. DPSC = Downtown Portland Sediment Characterization.
3. PP&R = Portland Parks & Recreation.
4. LWG = Lower Willamette Group.
5. ECSI = Environmental Cleanup Site Information (information current as of February 19, 2008).
6. LWG core and grab information obtained from LWG SCRA Combo as of August 28, 2008.
7. PGE Station L sediment cap boundary approximated based on PGE Station L Phase II Final Report (CH2M-Hill, 1991).

8. Zidell-DEQ Sediment Management Area (SMA) boundary provided by Maul, Foster, Alongi (November 3, 2008).
9. Analyte percentiles calculated based on the combined DPSC, PP&R, and LWG data from RM 12 to RM 16.
10. Cores with multiple sections analyzed depict percentiles for the highest concentrations detected.
11. Samples with multiple values, such as field QC splits and reanalyzed samples, were averaged as described in the Field and Data Report.
12. Outfall data obtained from the LWG's GIS shapefile entitled "Outfall_Oct_08.shp". Original source of information provided by the City of Portland in June of 2005. Stormwater pipeline data were provided to GSI Water Solutions by the City of Portland in February of 2008. As data were compiled from a variety of sources, no warranty is made as to the accuracy, reliability, or completeness of these data. Conveyance system information can be accessed at www.portlandmaps.com.

Concentrations of Total PCB Aroclors

0 - 50th Percentile (>MDL - 9 ug/kg)	>95th - 100th Percentile (>171 - 4200 ug/kg)
>50th - 75th Percentile (>9 - 43 ug/kg)	Not Detected above Method Detection Limit (MDL)
>75th - 90th Percentile (>43 - 113 ug/kg)	Not Analyzed
>90th - 95th Percentile (>113 - 171 ug/kg)	

